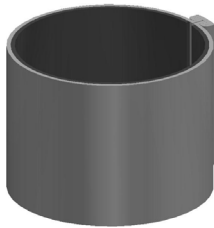


PVC NON PRESSURE SYSTEM

STORMWATER



W05690 • DN90 Stormwater PP Coupling Repair Kit SWJ

APPLICATION Repairs 90mm stormwater pipe by connecting two pipes together

FEATURES

- Australian Made
- Installation Economics
- Operation
- Efficiencies
- Corrosion Resistant

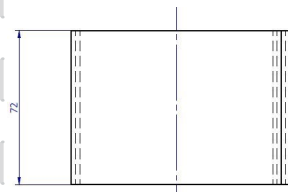
TECHNICAL DATA

PRODUCT PROPERTIES

Primary Material	Polypropylene
Colour	White
Joint Type	SWJ
Unprotected UV Exposure (years)	2 Years

PRODUCT DIMENSIONS

Rating	SN2
Degree	
UOM	EA
Nominal	90mm
ID	1.9mm
Wall Thickness	36mm
Weight	0.06kg
Carton Qty	80
Carton Weight (kg)	5.2kg



ENVIRONMENTAL CREDENTIALS AND STANDARDS

Environmental Accreditation	Best Environmental PVC - PVC Certificate No. BEP-PVC 0037
-----------------------------	---

MATERIAL PROPERTIES

MECHANICAL

Density Specific Gravity	0.9
Ultimate Tensile Strength	24MPa
Yield Strain	6.50%
Compressive Strength	
Tensile Modulus	1290MPa
Hardness Shore D	60
Poissons Ratio	0.42

THERMAL

Coefficient of Thermal Expansion	$9 \times 10^{-5} / ^\circ\text{C}$
Thermal Conductivity	0.16W/m.K
Specific Heat	1920 J/kg/ $^\circ\text{C}$
Vicat Softening Temperature	150 $^\circ\text{C}$
Flammability	Flammable

©Copyright: Iplex Pty Ltd 2019 all rights reserved. All drawings and information contained thereon are the exclusive property of Iplex Pipelines. Unless specifically noted, this drawing and information enclosed are subject to change at any time. Measures are for reference purpose only. If critical please contact Iplex Pipelines.

