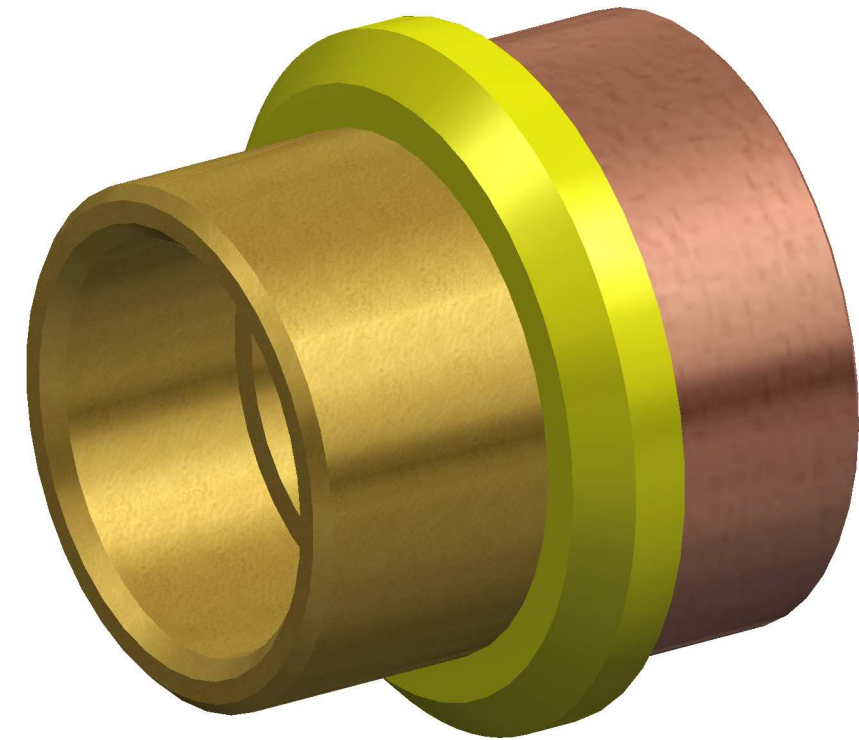


SECTION A-A

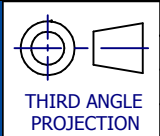


REVISIONS				
	A	INITIAL RELEASE.	XX-XX-18	M.H.
	REV	DESCRIPTION	DATE	APPROVED

UNLESS OTHERWISE STATED
NOM = Nominal
O/A = Overall
TYP = Typical
C/O = Clear Opening
All measures in millimeters.

This drawing and all information contained thereon are the exclusive property of Iplex Pipelines Pty Ltd. Unless specifically noted, this drawing and items shown on this drawing are subject to change at any time and without prior notice.
Measures are for reference purpose only.

© IPLEX PIPELINES PTY LTD
1300 0 IPLEX (47539)
www.iplex.com.au
info@iplexpipelines.com.au



MASS: .045 kg
MATERIAL: BRASS
A3 - NTS
Sheet 1 of 1

DESCRIPTION: DN25 x 20mm K1™ Gas Brass to Copper Brazing Tail
CODE: FK1732520
REV: A