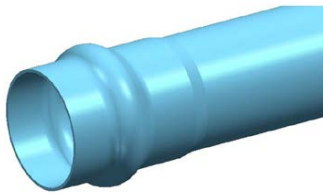


PVC PRESSURE SYSTEM

PVC-O



PDRA16100

DN100 x 6m PN16 Apollo Blue Series 2 PVC-O Pipe Rieber RRJ

APPLICATION Used for above or below ground applications to convey potable water in pressure applications

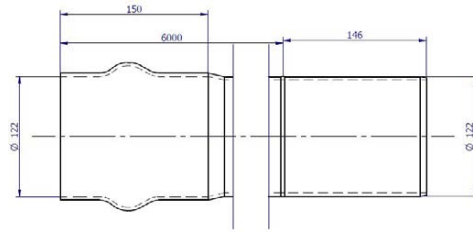
FEATURES

- Australian Made
- BEP PVC - Manufactured from Best Environmental Practice PVC
- Installation Economics
- Operation Efficiencies
- Corrosion Resistant
- Light weight
- Excellent Toughness and Ductility
- Large Internal Diameter and Smooth bore

TECHNICAL DATA

PRODUCT PROPERTIES

Primary Material	PVC-O
Colour	Blue
Joint Type	RRJ
Rubber Ring Material	EPDM
Allowable Operation Temperature - Degrees	50°C
Allowable Operating Pressure - 20°C	1600kPa
Average # of Joints per Litre – Iplex Lubricant	42
Unprotected UV Exposure (years)	2 Years
Maximum Diametric Deflection - 50 Years	7.50%
Minimum Radius of Curvature	30m
Socket Deflection	1°



PRODUCT DIMENSIONS

Category	Length	Socket Depth	150mm
Rating	PN16	Max Socket Nominal OD	150.4mm
Length	6m	Weight	12.5kg
Nominal	100mm	Crate Qty	36
ID	114.9mm	Crate Weight	450kg
Wall Thickness	3.4mm		

ENVIRONMENTAL CREDENTIALS AND STANDARDS

Environmental Accreditation	Best Environmental PVC - PVC Certificate No. BEP-PVC 0037
Product Standard	AS/NZS 441 "Orientated PVC (PVC-O) Pipes for Pressure Applications"
Standards Mark Certification	SMKP20188
WSAA Appraisal	PA1612

MATERIAL PROPERTIES

MECHANICAL

Density Specific Gravity	1.47
Ultimate Tensile Strength	52MPa
Yield Strain	5.5%
Compressive Strength	66MPa
Tensile Modulus	4000MPa
Hardness Shore D	85
Poissons Ratio	0.38
Design Stress	28MPa
Ring Bending Modulus (3mins)	4000MPa
Ring Bending Modulus (50Yrs)	1800MPa

THERMAL

Coefficient of Thermal Expansion	7x10 ⁻⁵ /°C
Thermal Conductivity	0.138W/m.K
Specific Heat	1047 J/kg/°C
Vicat Softening Temperature	>79°C
Flammability	Will not support combustion
Fire Index – Ignitability	2
Fire Index – Smoke Development	8
Fire Index – Spread of Flame	0
Fire Index – Heat Evolved	2

©Copyright: Iplex Pty Ltd 2019 all rights reserved. All drawings and information contained thereon are the exclusive property of Iplex Pipelines. Unless specifically noted, this drawing and information enclosed are subject to change at any time. Measures are for reference purpose only. If critical please contact Iplex Pipelines.

