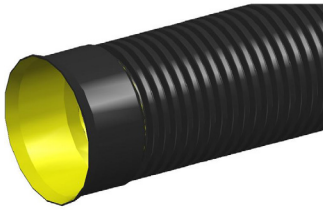


PP DRAINAGE & SEWER SYSTEMS

BLACKMAX®



GR8600C

DN600 x 3m SN8 BlackMAX Pipe RRJ

APPLICATION Used to convert rainwater or surface water suitable for stormwater drainage, eustraine and ocean outfalls, road culverts, low head irrigation, leachate collection and stormwater retention

ADDITIONAL INFORMATION Requires DN600 Rubber Ring Iplex Code: GERSEW600

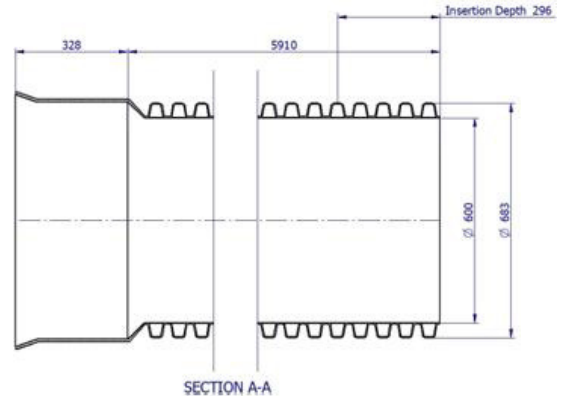
FEATURES

- Australian Made
- Installation Economics
- Operation Efficiencies
- Abrasion and Corrosion Resistant
- Tree root intrusion resistance
- Smooth bore for hydraulic performance
- Low embodied energy for environmental benefits

TECHNICAL DATA

PRODUCT PROPERTIES

| | |
|---|----------------------------------|
| Primary Material | PP |
| Colour | Black with yellow internal liner |
| Joint Type | RRJ |
| Rubber Ring Material | SBR |
| Allowable Operating Temperature - Degrees | 50°C |
| Average # of Joints per Litre – Iplex Lubricant | 14 |
| Unprotected UV Exposure (years) | 2 Years |
| Maximum Diametric Deflection - 50 Years | 7.50% |
| Socket Deflection | 1° |
| Maximum Support Spacing of Pipe Graded | 3m |
| Maximum Support Spacing of Pipe Vertical | 6m |



PRODUCT DIMENSIONS

| | | | |
|----------------|---------|-----------------------|---------|
| Category | Length | Max Socket Nominal OD | 820mm |
| Rating | SN8 | Profile Pitch | 66.4mm |
| Length | 3m | Witness Mark | 296mm |
| Nominal | 682.8mm | Weight | 59.7kg |
| ID | 595.9mm | Crate Qty | 3 |
| Wall Thickness | 3.5mm | Crate Weight | 179.1kg |
| Socket Depth | 296mm | | |

ENVIRONMENTAL CREDENTIALS AND STANDARDS

| | |
|------------------------------|---|
| Environmental Accreditation | Best Environmental PVC - PVC Certificate No. BEP-PVC 0037 |
| Product Standard | AS/NZS 5065 "Polyethylene and polypropylene pipes & fittings for drainage and sewerage applications" AS/NZS 2566.1 "Buried flexible pipelines - Part 1, Structural design & AS/NZS 2566.2 "Buried flexible pipelines - Part 2, Installation" |
| Standards Mark Certification | SMKP20603 |

MATERIAL PROPERTIES

MECHANICAL

| | |
|------------------------------|---------|
| Density Specific Gravity | 0.9 |
| Yield Strain | 8% |
| Tensile Modulus | 31MPa |
| Hardness Shore D | 60 |
| Poissons Ratio | 0.45 |
| Elastic Modulus | 1700MPa |
| Creep Ratio | 3.3 |
| Ring Bending Strain | 4 |
| Ring Bending Modulus (3mins) | 1300MPa |
| Ring Bending Modulus (50Yrs) | 200MPa |

THERMAL

| | |
|----------------------------------|---------------------------|
| Coefficient of Thermal Expansion | 15 x 10 ⁻⁵ /°C |
| Thermal Conductivity | 0.22W/m.K |
| Specific Heat | 1920 J/kg/°C |
| Vicat Softening Temperature | 95 |
| Flammability | Flammable |

©Copyright: Iplex Pty Ltd 2019 all rights reserved. All drawings and information contained thereon are the exclusive property of Iplex Pipelines. Unless specifically noted, this drawing and information enclosed are subject to change at any time. Measures are for reference purpose only. If critical please contact Iplex Pipelines.

