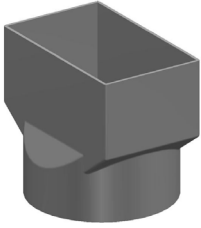


# PVC NON PRESSURE SYSTEM

## STORMWATER



**W160901065 • DN90 x DN100 x DN65 Stormwater PVC-U Rectangle Adaptor SWJ**

**APPLICATION** Connects pipeline conveying rainwater or surface water to a rectangular downpipe

### FEATURES

- Australian Made
- BEP PVC - Manufactured from Best Environmental Practice PVC
- Installation Economics
- Operation Efficiencies
- Corrosion Resistant
- Tree root intrusion resistance

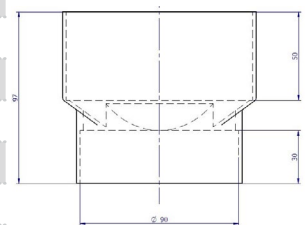
## TECHNICAL DATA

### PRODUCT PROPERTIES

|   |         |
|---|---------|
| Primary Material                                  | PVC     |
| Colour  | White   |
| Joint Type  | SWJ     |
| Allowable Operation Temperature - Degrees         | 50      |
| Average # of Joints per Litre – Iplex Solvent     | 60      |
| Average Number of Joints per Litre - Iplex Primer | 180     |
| Unprotected UV Exposure (years)                   | 2 Years |

### PRODUCT DIMENSIONS

|                    |        |
|--------------------|--------|
| Rating             | SN2    |
| UOM                | EA     |
| Nominal            | 90mm   |
| ID                 | 90mm   |
| Wall Thickness     | 1.9mm  |
| Weight             | 0.14kg |
| Carton Qty         | 60     |
| Carton Weight (kg) | 8.4kg  |



### ENVIRONMENTAL CREDENTIALS AND STANDARDS

|                             |  |
|-----------------------------|--|
| Environmental Accreditation | Best Environmental PVC - PVC Certificate No. BEP-PVC 0037                            |
| Product Standard            | AS/NZS 1254 "PVC-U Pipes and Fittings for Stormwater and Surface Water Applications" |

## MATERIAL PROPERTIES

### MECHANICAL

|                              |         |
|------------------------------|---------|
| Density Specific Gravity     | 1.47    |
| Ultimate Tensile Strength    | 52MPa   |
| Yield Strain                 | 5.5%    |
| Compressive Strength         | 66MPa   |
| Tensile Modulus              | 2750MPa |
| Hardness Shore D             | 85      |
| Poissons Ratio               | 0.38    |
| Ring Bending Modulus (3mins) | 3200MPa |
| Ring Bending Modulus (50Yrs) | 1400MPa |

### THERMAL

|                                  |                                     |
|----------------------------------|-------------------------------------|
| Coefficient of Thermal Expansion | $7 \times 10^{-5} / ^\circ\text{C}$ |
| Thermal Conductivity             | 0.138W/m.K                          |
| Specific Heat                    | 1047 J/kg/ $^\circ\text{C}$         |
| Vicat Softening Temperature      | 75 $^\circ\text{C}$                 |
| Flammability                     | Will not support combustion         |
| Fire Index – Ignitability        | 8                                   |
| Fire Index – Smoke Development   | 8                                   |
| Fire Index – Spread of Flame     | 0                                   |
| Fire Index – Heat Evolved        | 1                                   |

©Copyright: Iplex Pty Ltd 2019 all rights reserved. All drawings and information contained thereon are the exclusive property of Iplex Pipelines. Unless specifically noted, this drawing and information enclosed are subject to change at any time. Measures are for reference purpose only. If critical please contact Iplex Pipelines.

