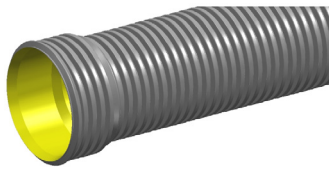


PP DRAINAGE & SEWER SYSTEMS

SEWERMAX®



GR10525C

DN525 x 3m SN10 SewerMAX® Pipe RRJ

APPLICATION Used to convey sewage in gravity sewer mains.

ADDITIONAL INFORMATION Requires DN525 Rubber Ring
Iplex Code: GERSEW525

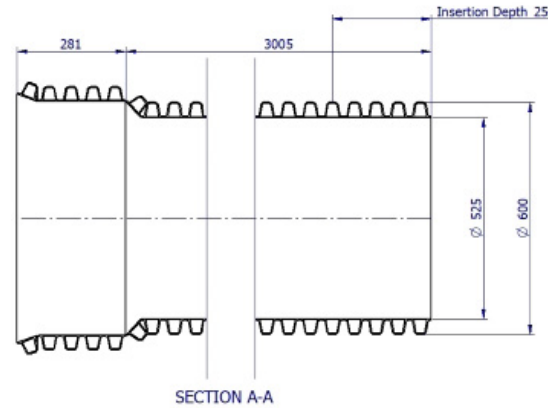
FEATURES

- Australian Made
- Installation Economics
- Operation Efficiencies
- Abrasion and Chemical Resistant
- Tree root intrusion resistance
- Smooth bore for hydraulic performance
- Low embodied energy for environmental benefits

TECHNICAL DATA

PRODUCT PROPERTIES

Primary Material	PP
Colour	Grey with yellow internal liner
Joint Type	RRJ
Rubber Ring Material	SBR
Allowable Operation Temperature - Degrees	50°C
Average # of Joints per Litre – Iplex Lubricant	16
Unprotected UV Exposure (years)	2 Years
Maximum Diametric Deflection - 50 Years	7.50%
Minimum Radius of Curvature	75m
Socket Deflection	1°



PRODUCT DIMENSIONS

Category	Length	Max Socket Nominal OD	725mm
Rating	SN10	Chamfer Detail	56.9mm
Length	3m	Witness Mark	254mm
Nominal	600.5mm	Weight	54.62kg
ID	522.3mm	Crate Qty	2
Wall Thickness	3.2mm	Crate Weight	109.24kg
Socket Depth	254mm		

ENVIRONMENTAL CREDENTIALS AND STANDARDS

Environmental Accreditation	Environmental Product Declaration (EPD) S-P-00714
Product Standard	AS/NZS 5065 "Polyethylene and polypropylene pipes & fittings for drainage and sewerage applications" AS/NZS 2566.1 "Buried flexible pipelines - Part 1, Structural design & AS/NZS 2566.2 "Buried flexible pipelines - Part 2, Installation"
Standards Mark Certification	Standards Mark Certification SMKP20603

MATERIAL PROPERTIES

MECHANICAL

Density Specific Gravity	0.9
Yield Strain	8%
Compressive Strength	48MPa
Tensile Modulus	31MPa
Creep Ratio	3.3
Hardness Shore D	60
Poissons Ratio	0.45
Ring Bending Strain	4
Ring Bending Modulus (3mins)	1300MPa
Ring Bending Modulus (50Yrs)	200MPa

THERMAL

Coefficient of Thermal Expansion	15x10 ⁻⁵ /°C
Thermal Conductivity	0.22W/m.K
Specific Heat	1680 J/kg/°C
Vicat Softening Temperature	95°C
Flammability	Flammable

©Copyright: Iplex Pty Ltd 2019 all rights reserved. All drawings and information contained thereon are the exclusive property of Iplex Pipelines. Unless specifically noted, this drawing and information enclosed are subject to change at any time. Measures are for reference purpose only. If critical please contact Iplex Pipelines.

