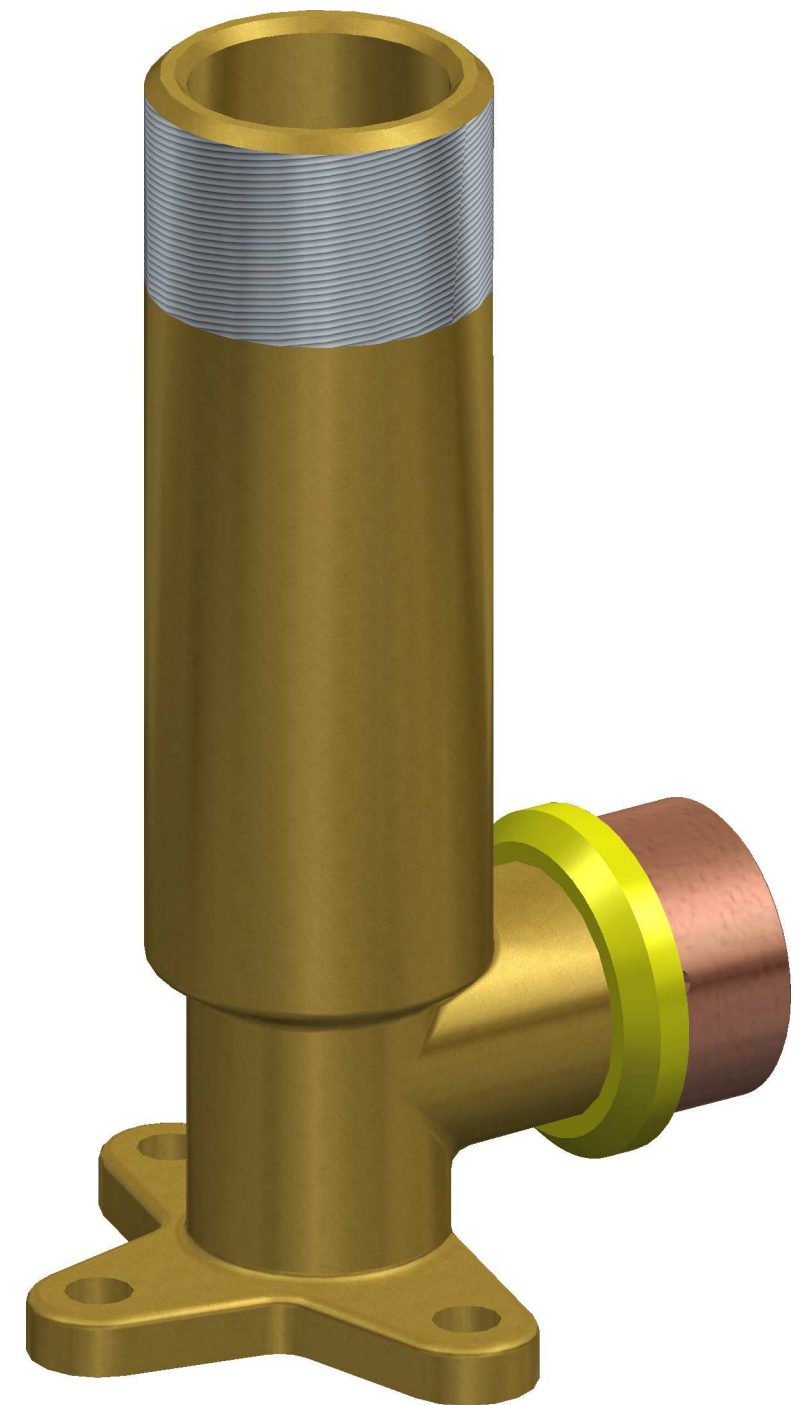


SECTION A-A

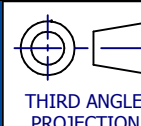


REV	DESCRIPTION	DATE	APPROVED
A	INITIAL RELEASE.	XX-XX-18	M.H.

UNLESS OTHERWISE STATED
NOM = Nominal
O/A = Overall
TYP = Typical
C/O = Clear Opening
All measures in millimeters.

This drawing and all information contained thereon are the exclusive property of Iplex Pipelines Pty Ltd. Unless specifically noted, this drawing and items shown on this drawing are subject to change at any time and without prior notice.
Measures are for reference purpose only.

© IPLEX PIPELINES PTY LTD
1300 0 IPLEX (47539)
www.iplex.com.au
info@iplexpipelines.com.au



MASS: .272 kg
MATERIAL: BRASS
A3 - NTS
Sheet 1 of 1

DESCRIPTION: DN20 x 20mm x 90D K1™ Gas Brass Wingback Elbow MI BSP
CODE: FK1602020
REV: A