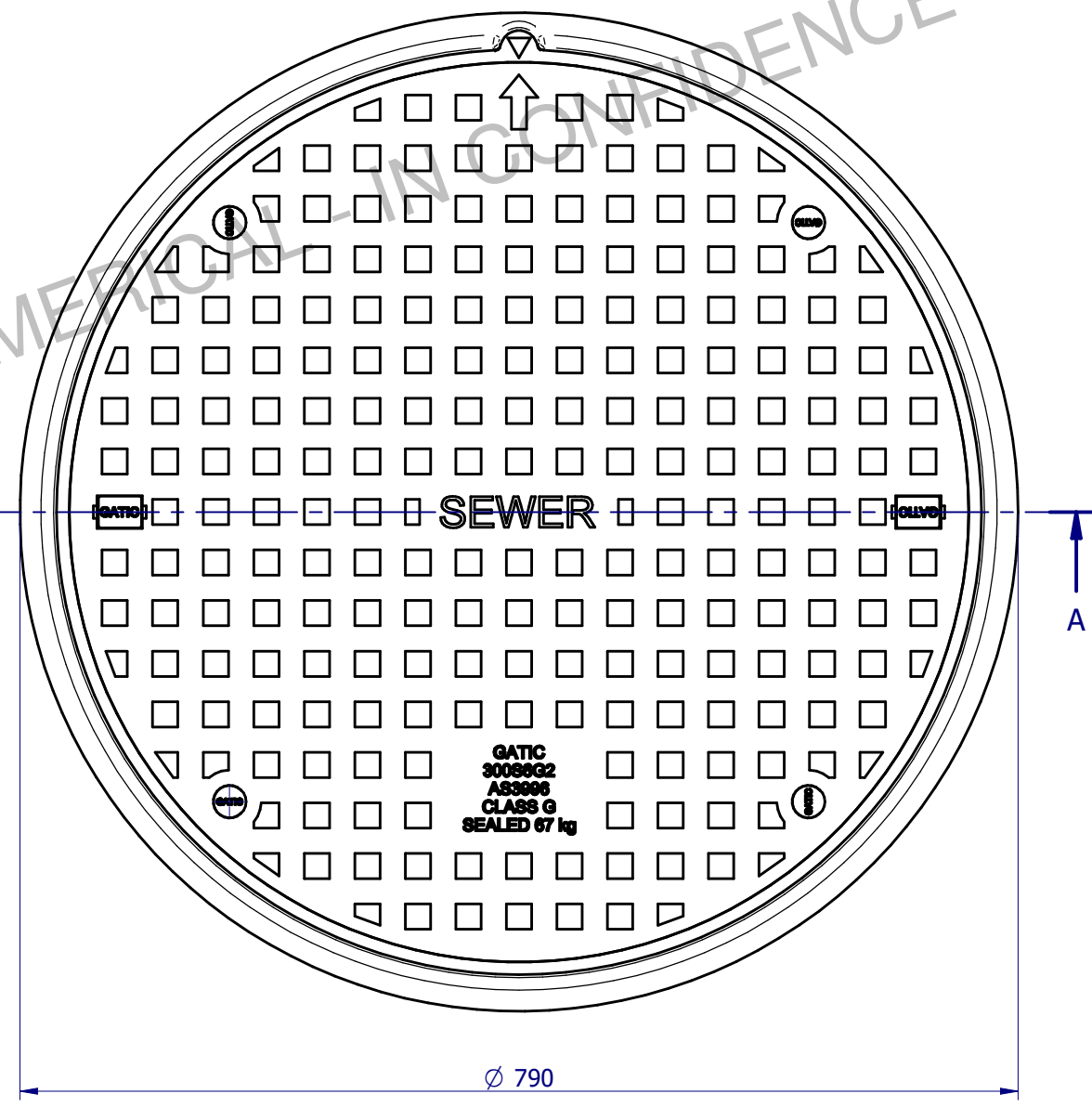
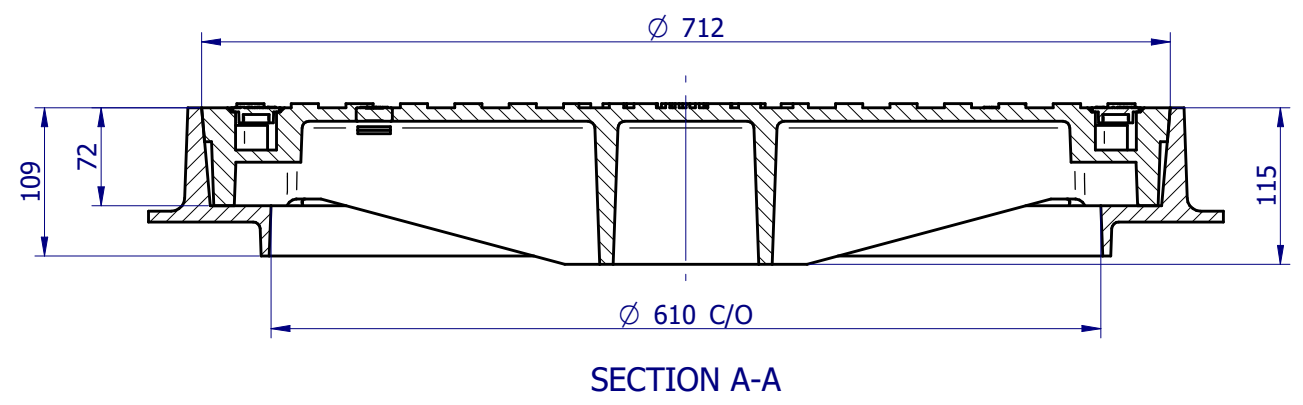
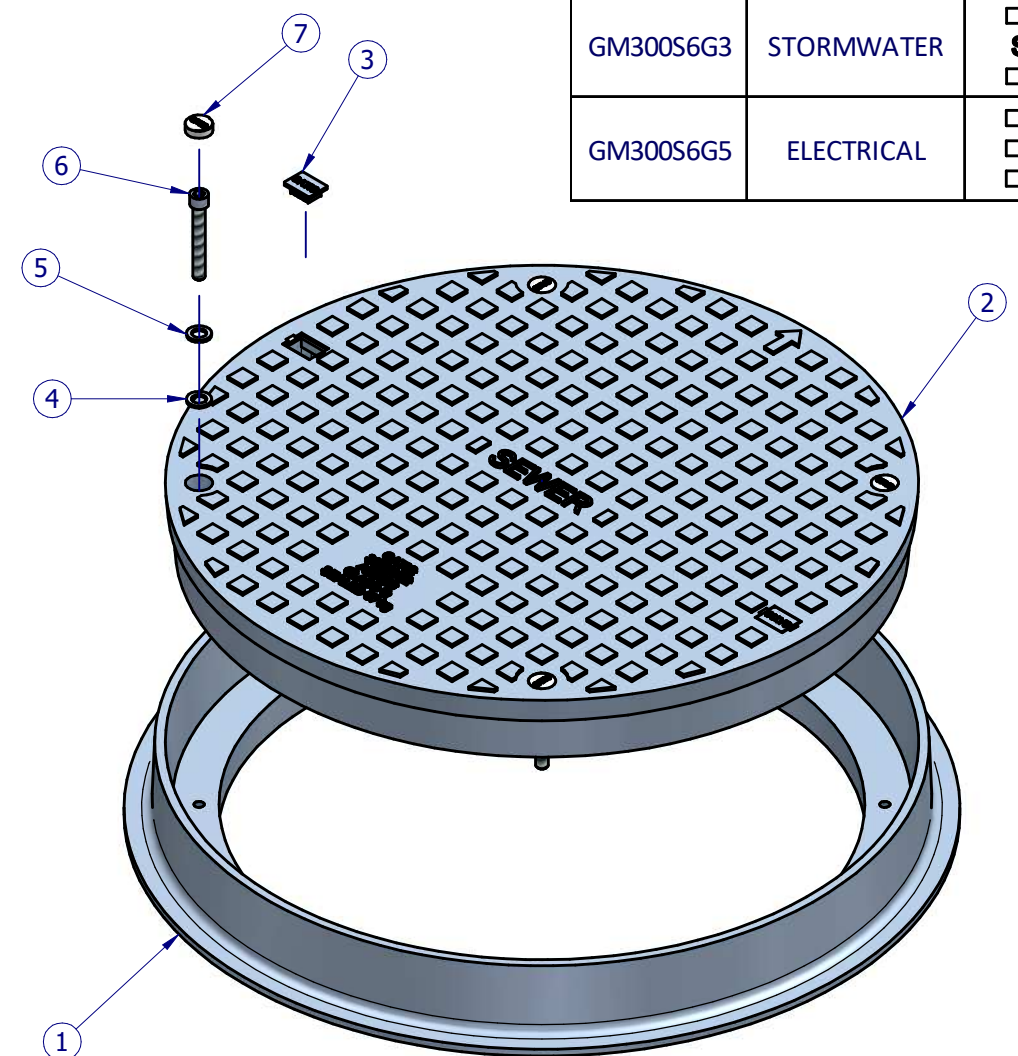


GM300S6G2 SHOWN



GATIC
300S6G2
AS3006
CLASS G
SEALED 67 kg

CODE	INSCRIPTION	
GM300S6G	N/A, blank	□ □
GM300S6G2	SEWER	□ □ □ □ □ □ □ □ □ □ SEWER □ □ □ □ □ □ □ □ □ □
GM300S6G3	STORMWATER	□ □ □ □ □ □ □ □ STORMWATER □ □ □ □ □ □ □ □
GM300S6G5	ELECTRICAL	□ □ □ □ □ □ □ □ □ ELECTRICAL □ □ □ □ □ □ □ □ □



Item No.	Drwg No.	Rev	Title	Material	Qty	Mass
1	4203	B	Ø610 C/O Frame Class G 900 kN	Ductile Iron 500-7	1	35.4 kg
2	4202	C	Ø610 C/O Solidtop Cover Class G 900 kN	Ductile Iron 500-7	1	66.6 kg
3	1681	A	Plastic Keyhole Plug	UV Stabilized Nylon	2	0.0 kg
4	2917	A	M12 Washer	Nylon, general purpose	4	0.0 kg
5	2918	A	M12 Washer	Stainless Steel, 304	4	0.0 kg
6	5995	A	M12x85 Socket Head Cap Bolt	Stainless Steel, 304	4	0.4 kg
7	2854	C	Plastic Plug Ø26 mm	UV Stabilized Nylon	4	0.0 kg

UNLESS OTHERWISE STATED
ALL MEASURES IN MILLIMETERS.
GENERAL CAST TOLERANCES:
CT9 to ISO 8062.
CASTING RADII: 3 mm
DRAFT TAPERS: 2°

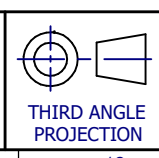
LINEAR MACHINING TOLERANCE:
X. ±0.25 mm
X.X ±0.10 mm

ANGULAR MACHINING TOLERANCE:
X. ±0.5°
X.X ±0.1°

NOM = Nominal; O/A = Overall; TYP = Typical; C/O = Clear Opening

FINISH: ALL CAST SURFACES TO BE PAINTED BLACK. FABRICATED COMPONENTS TO BE HOT DIP GALVANISED TO AS4680. RUST PROOF SEALANT TO BE APPLIED ON ALL MACHINED SURFACES.

GATIC
GATIC PTY LTD
9-15 Radford Road, PO Box 312, Reservoir VIC. 3073
Ph: 03 9316 2666 Fax: 03 9315 0099 www.gatic.com.au



DESIGNED:	BY	DATE
S.S.	S.S.	12-10-11
DRAWN:	BY	DATE
F.M.	F.M.	12-10-11
CHECKED:	BY	DATE
S.S.	S.S.	12-10-11
APPROVED:	BY	DATE
H.B.	H.B.	12-10-11

CODE: GM300S6G*	TITLE: Ø610 C/O SOLID TOP COVER AND FRAME ASSEMBLY CLASS G 900 kN
SCALE: N.T.S.	DRG. No: 4204
FORMAT: A3	REVISION: C
SHEET: 1 of 1	MASS: 102.4 kg