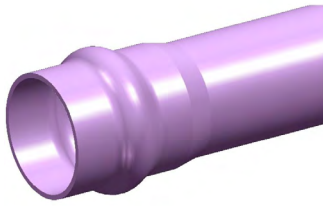


PVC PRESSURE SYSTEM

PVC-M



PDHRL16100

DN100 x 6m PN16 Purple Rhino Series 2 PVC-M Pipe Rieber RRJ

APPLICATION Used for above or below ground applications to convey recycled water in pressure applications.

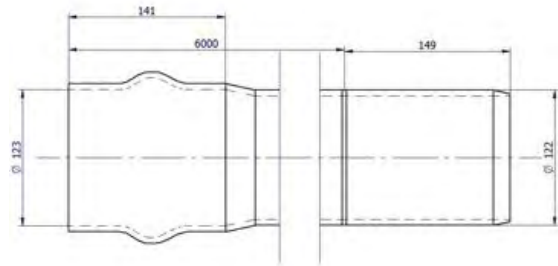
FEATURES

- Australian Made
- BEP PVC - Manufactured from Best Environmental Practice PVC
- Installation Economics
- Operation Efficiencies
- Corrosion Resistant
- Light weight
- Electrically non conductive

TECHNICAL DATA

PRODUCT PROPERTIES

| | |
|---|---------|
| Primary Material | PVC-M |
| Colour | Purple |
| Joint Type | RRJ |
| Rubber Ring Material | EPDM |
| Allowable Operation Temperature - Degrees | 50°C |
| Allowable Operating Pressure - 20°C | 1600kPa |
| Average # of Joints per Litre – Iplex Lubricant | 42 |
| Unprotected UV Exposure (years) | 2 Years |
| Maximum Diametric Deflection - 50 Years | 7.50% |
| Minimum Radius of Curvature | 30m |
| Socket Deflection | 1° |



PRODUCT DIMENSIONS

| | | | |
|----------------|---------|-----------------------|----------|
| Category | Length | Max Socket Nominal OD | 121.9mm |
| Rating | PN16 | Chamfer Detail | 17mm |
| Length | 6m | Witness Mark | 154mm |
| Nominal | 100mm | Weight | 18.41kg |
| ID | 110.3mm | Crate Qty | 36 |
| Wall Thickness | 5.7mm | Crate Weight | 662.80kg |
| Socket Depth | 141.4mm | | |

ENVIRONMENTAL CREDENTIALS AND STANDARDS

| | |
|---|--|
| Environmental Accreditation | Best Environmental PVC - PVC Certificate No. BEP-PVC 0037 |
| Product Standard | AS/NZS 4765 "Modified PVC (PVC-M) Pipes for Pressure Applications" |
| Standards Mark Certification SMK02730.4, SMK02468.4, SMK02748 | WSAA Appraisal - PA1612 |

MATERIAL PROPERTIES

MECHANICAL

| | |
|------------------------------|---------|
| Density Specific Gravity | 1.47 |
| Ultimate Tensile Strength | 38MPa |
| Yield Strain | 5.5% |
| Compressive Strength | 48MPa |
| Tensile Modulus | 3000MPa |
| Hardness Shore D | 85 |
| Poissons Ratio | 0.38 |
| Design Stress | 17.5MPa |
| Ring Bending Modulus (3mins) | 3000MPa |
| Ring Bending Modulus (50Yrs) | 1200MPa |

THERMAL

| | |
|----------------------------------|-------------------------------------|
| Coefficient of Thermal Expansion | $7 \times 10^{-5} / ^\circ\text{C}$ |
| Thermal Conductivity | 0.138W/m.K |
| Specific Heat | 1047 J/kg/°C |
| Vicat Softening Temperature | >79°C |
| Flammability | Will not support combustion |
| Fire Index – Ignitability | 2 |
| Fire Index – Smoke Development | 8 |
| Fire Index – Spread of Flame | 0 |
| Fire Index – Heat Evolved | 2 |

©Copyright: Iplex Pty Ltd 2019 all rights reserved. All drawings and information contained thereon are the exclusive property of Iplex Pipelines. Unless specifically noted, this drawing and information enclosed are subject to change at any time. Measures are for reference purpose only. If critical please contact Iplex Pipelines.

