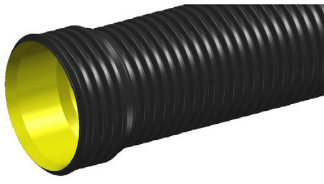


PP DRAINAGE & SEWER SYSTEMS

BLACKMAX®



GR8300C

DN300 x 3m SN8 BlackMAX Pipe RRJ

APPLICATION Used to convert rainwater or surface water suitable for stormwater drainage, eustraine and ocean outfalls, road culverts, low head irrigation, leachate collection and stormwater retention

ADDITIONAL INFORMATION Requires DN300 Rubber Ring Iplex Code: GERSEW300

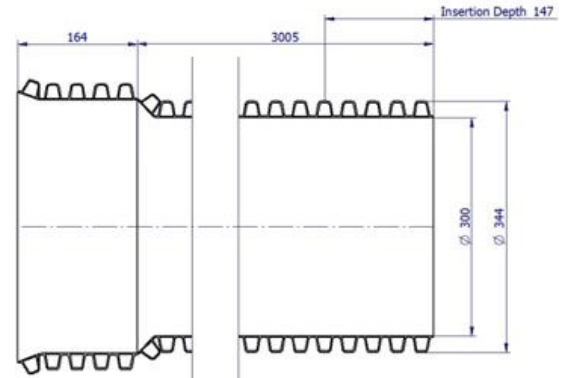
FEATURES

- Australian Made
- Installation Economics
- Operation Efficiencies
- Abrasion and Corrosion Resistant
- Tree root intrusion resistance
- Smooth bore for hydraulic performance
- Low embodied energy for environmental benefits

TECHNICAL DATA

PRODUCT PROPERTIES

Primary Material	PP
Colour	Black with yellow internal liner
Joint Type	RRJ
Rubber Ring Material	SBR
Allowable Operating Temperature - Degrees	50°C
Average # of Joints per Litre – Iplex Lubricant	28
Unprotected UV Exposure (years)	2 Years
Maximum Diametric Deflection - 50 Years	7.50%
Socket Deflection	1°
Maximum Support Spacing of Pipe Graded	1.9m
Maximum Support Spacing of Pipe Vertical	3.8m



PRODUCT DIMENSIONS

Category	Length	Max Socket Nominal OD	414mm
Rating	SN8	Profile Pitch	33.2mm
Length	3m	Witness Mark	147mm
Nominal	343.6mm	Weight	19.4kg
ID	299.5mm	Crate Qty	6
Wall Thickness	2.0mm	Crate Weight	116.4kg
Socket Depth	147mm		

ENVIRONMENTAL CREDENTIALS AND STANDARDS

Environmental Accreditation	Best Environmental PVC - PVC Certificate No. BEP-PVC 0037
Product Standard	AS/NZS 5065 "Polyethylene and polypropylene pipes & fittings for drainage and sewerage applications" AS/NZS 2566.1 "Buried flexible pipelines - Part 1, Structural design & AS/NZS 2566.2 "Buried flexible pipelines - Part 2, Installation"
Standards Mark Certification	SMKP20603

MATERIAL PROPERTIES

MECHANICAL

Density Specific Gravity	0.9
Yield Strain	8%
Tensile Modulus	31MPa
Hardness Shore D	60
Poissons Ratio	0.45
Elastic Modulus	1700MPa
Creep Ratio	3.3
Ring Bending Strain	4
Ring Bending Modulus (3mins)	1300MPa
Ring Bending Modulus (50Yrs)	200MPa

THERMAL

Coefficient of Thermal Expansion	15 x 10 ⁻⁵ /°C
Thermal Conductivity	0.22W/m.K
Specific Heat	1920 J/kg/°C
Vicat Softening Temperature	95
Flammability	Flammable

©Copyright: Iplex Pty Ltd 2019 all rights reserved. All drawings and information contained thereon are the exclusive property of Iplex Pipelines. Unless specifically noted, this drawing and information enclosed are subject to change at any time. Measures are for reference purpose only. If critical please contact Iplex Pipelines.

