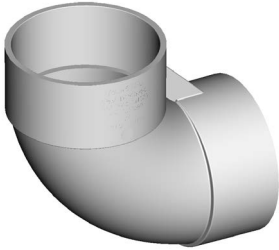


DWV



D00210088HD
DN100 X 88D HD SN8 DWV PVC-U Bend FF SWJ

APPLICATION Changes direction of a pipeline conveying non-pressure sewage and greywater by 88°

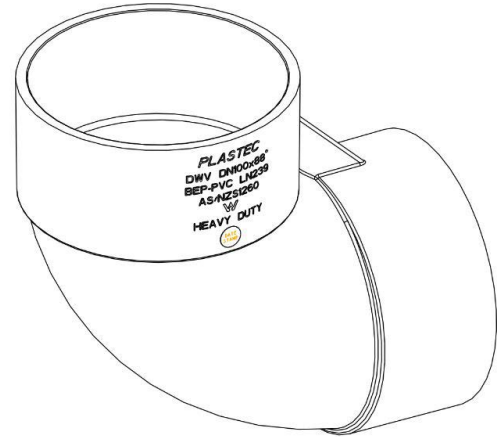
FEATURES

- BEP PVC - Manufactured from Best Environmental Practice PVC
- Installation Economics
- Operation Efficiencies
- Corrosion Resistant
- Tree root intrusion resistance
- Leakage Elimination

TECHNICAL DATA

PRODUCT PROPERTIES

Primary Material	PVC-U
Colour	Grey
Joint Type	SWJ
Allowable Operation Temperature - Degrees	60°C
Allowable Operating Pressure - 20°C	900kPa
Average Number of Joints per Litre – Iplex Solvent	26
Average Number of Joints per Litre – Iplex Primer	78
Cure Time for Solvent Weld Joints	24hrs
Unprotected UV Exposure (years)	2 Years



PRODUCT DIMENSIONS

Category	Bend/Elbow	Degree	88
Rating	SN8	Weight	0.54kg
Nominal	100mm	Carton Qty	18

ENVIRONMENTAL CREDENTIALS AND STANDARDS

Environmental Accreditation	Best Environmental PVC - PVC Certificate No. BEP-PVC 0037
Product Standard	AS/NZS 1260 "PVC-U pipes and fittings for drain, waste and vent applications"
Watermark Certification 23900	WSAA Appraisal - PA1404

MATERIAL PROPERTIES

MECHANICAL

Density Specific Gravity	1.47
Ultimate Tensile Strength	52MPa
Yield Strain	5.5%
Compressive Strength	66MPa
Tensile Modulus	2750MPa
Hardness Shore D	85
Poissons Ratio	0.38
Ring Bending Modulus (3mins)	3200MPa
Ring Bending Modulus (50Yrs)	1400MPa

THERMAL

Coefficient of Thermal Expansion	7x10 ⁻⁵ /°C
Thermal Conductivity	0.138W/m.K
Specific Heat	1047 J/kg/°C
Vicat Softening Temperature	75°C
Flammability	Will not support combustion
Fire Index – Ignitability	8
Fire Index – Smoke Development	8
Fire Index – Spread of Flame	0
Fire Index – Heat Evolved	1

©Copyright: Iplex Pty Ltd 2020 all rights reserved. Unless specifically noted, this drawing and information enclosed are subject to change at any time. Measures are for reference purpose only. If critical please contact Iplex Pipelines.

