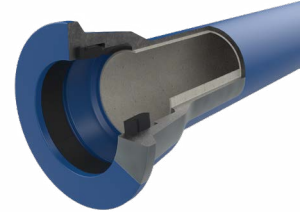


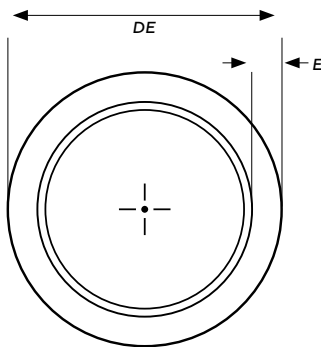
IRONTITE® LITE PN20 ZINC/ ALUMINIUM DUCTILE IRON PIPE

TECH SHEET

IronTite® Lite range from DN225 to DN750 is available in both blue and red epoxy external coating of Zn-Al primer (mean mass 400 gm/m²) + liquid epoxy (min. 80 µm DFT) for both potable, sewerage and waste applications with options for internal linings. The external lining protects the pipe against damaging and corrosive effects of the soil and can be buried without sleeving in soils with a resistivity greater than or equal to 500 Ω cm (soils below marine water table), or can be buried with sleeving (please check with local water authority).



The Jindal SAW manufactured pipe has a socket push-on joint (flexile jointing) with a unique EPDM gasket, clearly identifiable by the green markings on the face of the gasket, allows a quick and safe installation. Due to their high angular deviation, there is the potential to reduce the number of fittings, increasing the rate of installation.



Size Range
DN225 - DN750

Nominal Pressure
PN20

Effective Length
5.5m

Certification
AS/NZS 2280 "Ductile iron pipes and fittings"
AS/NZS 4020 "Testing of products for use in contact with drinking water"

WSAA Appraisal PA1802

ISO 2531/7186

OPTIONS*

Internal Lining

Bituminous seal coat to AS/NZS 4020
Sulphate Resistant Cement (SRC) –
For IronTite® Red applications
High Alumina Cement (HAC) –
For IronTite® Red applications

DN	OUTSIDE DIAMETER (DE)		PIPE WALL THICKNESS, E (mm)	CEMENT MORTAR LINING THICKNESS (mm)
	OD (MM)	TOLERANCE (mm)	PN35	
225	259	+1, -2	4.5	5
250	286	+1, -2	4.6	5
300	345	+1, -2	4.6	5
375	426	± 2	4.8	5
450	507	± 2	5.4	5
500	560	± 2	5.8	5
600	667	± 2	6.7	5
750	826	± 2	8.0	6

External Coating

Polyurethane as per EN 15189 (700 µm – 2000 µm)

Zn primer (mean mass 200 gm/m²) + Bitumen coating

End Connections

JSAW-LOCK Double socket full restraint joint ends with welded bead ring

JSAW-MRJ – Mechanically restrained Joints

Sizes

ISO pipe sizes available

*Please note options will have minimum run quantities.

The information contained in this document should serve as a guide only and is subject to change without notice. For more information please contact Iplex Pipelines Australia Pty Ltd.

