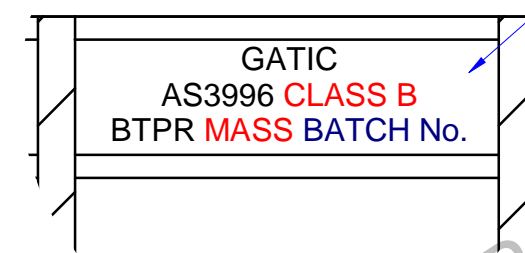
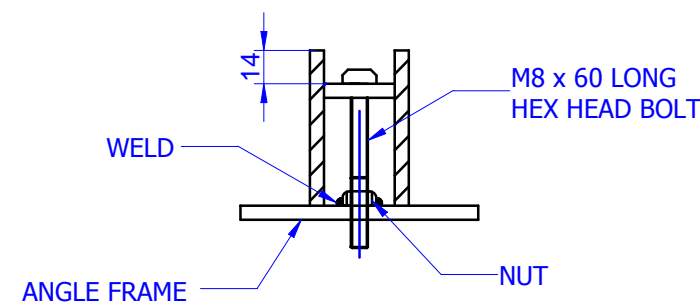
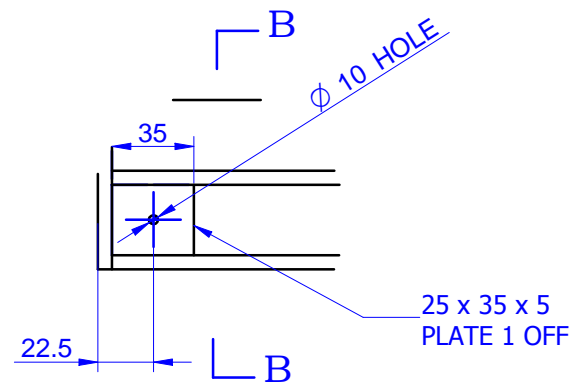
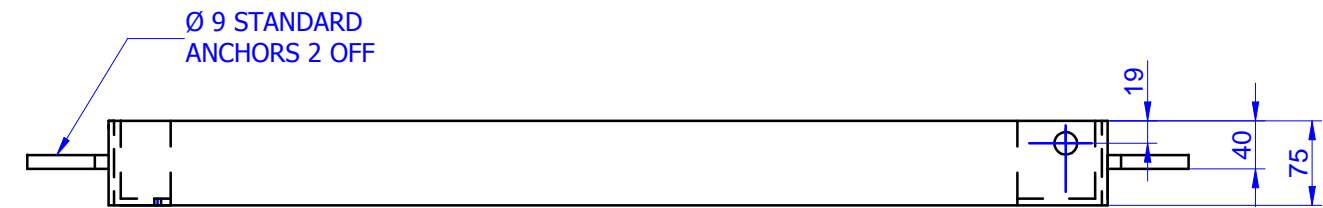
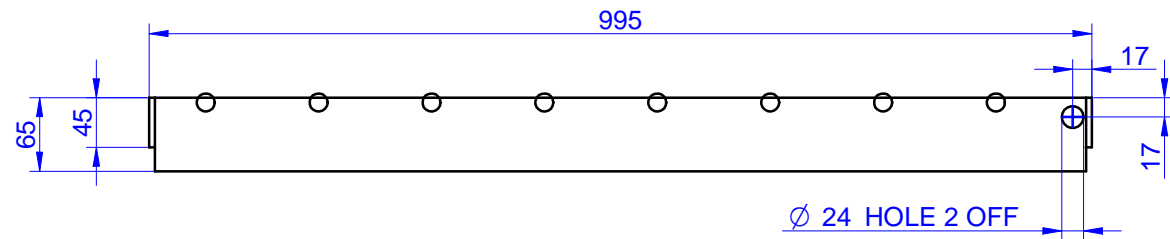
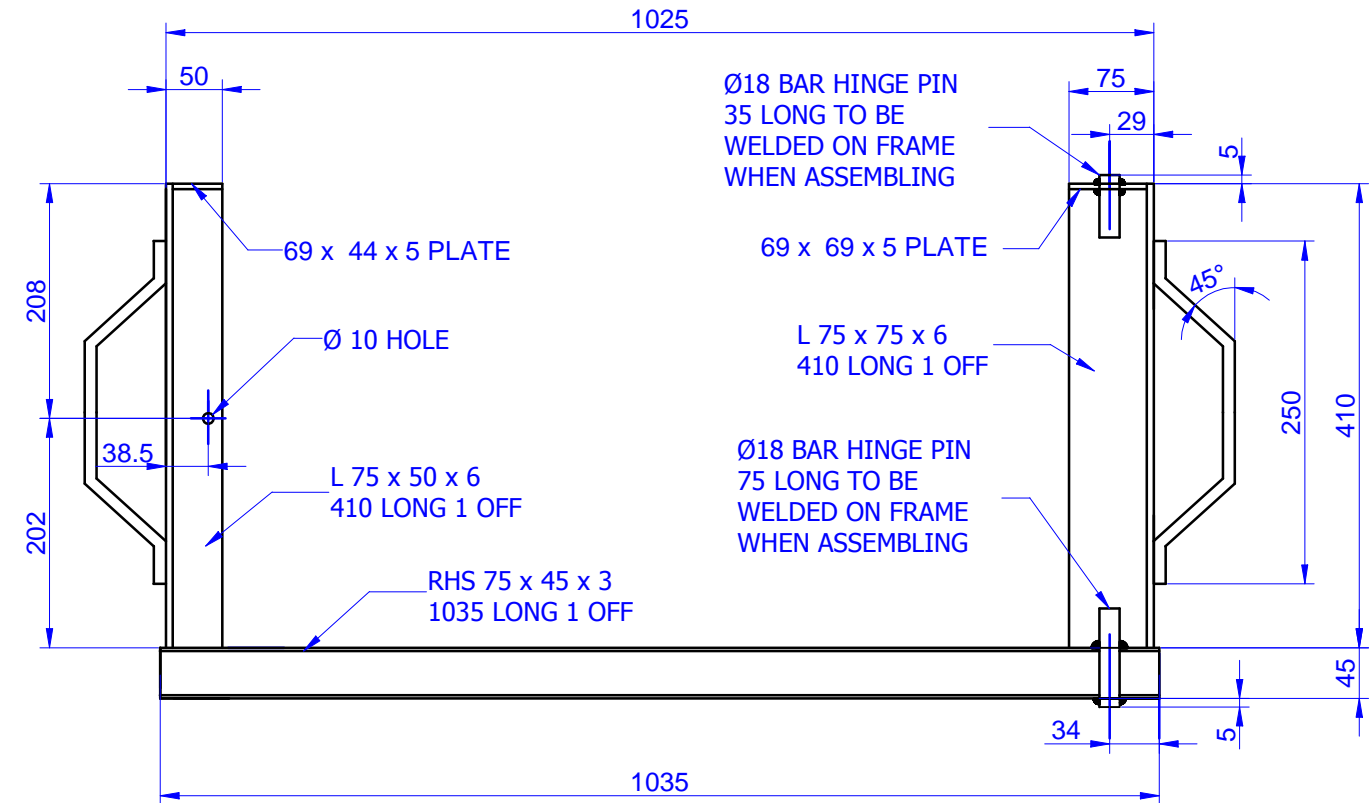
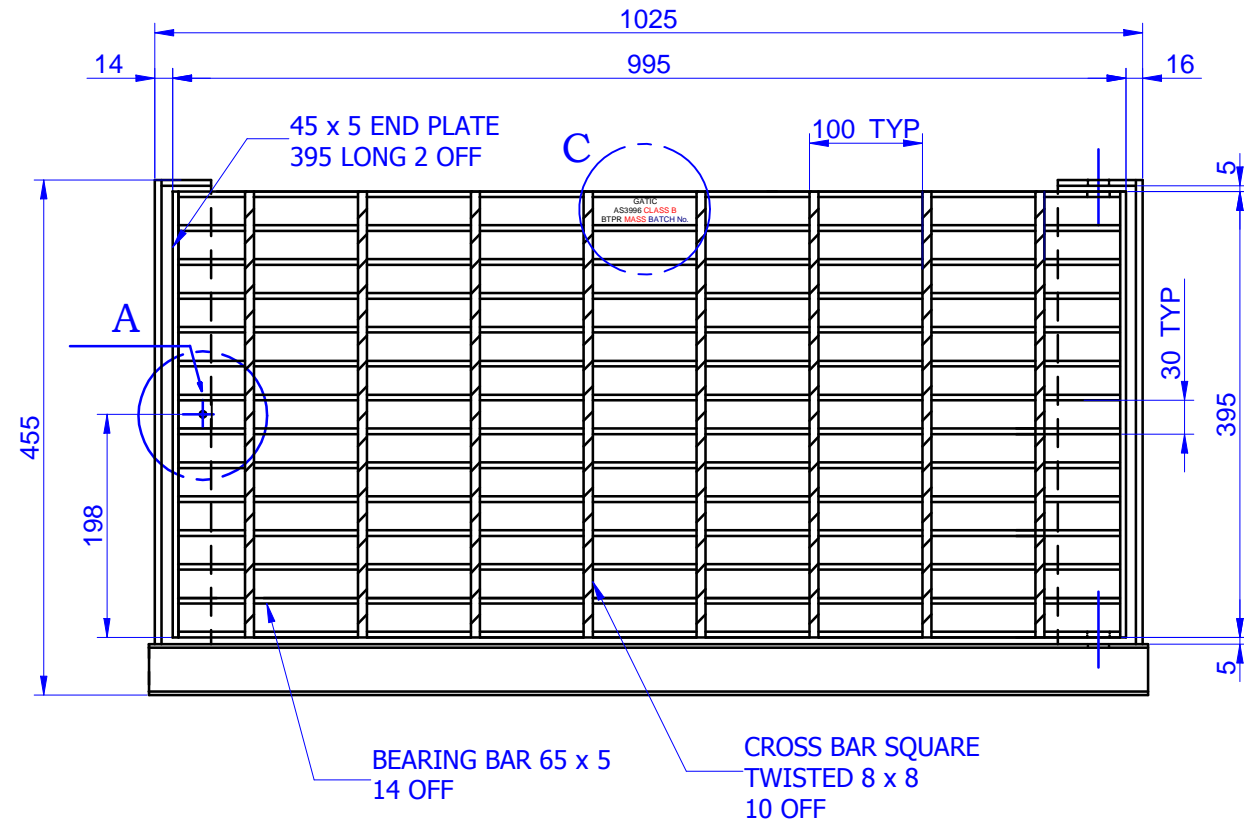


GRATE

FRAME



NAMEPLATE TO BE
WELDED. REFER DRWG
3335A FOR DETAILS

NOTE:
- MASS OF GRATE : 38.6 kg
- MATERIAL: STRUCTURAL STEEL GRADE
250 MPa TO AS 3768
- REMOVE ZINC SPIKES AND BUILD UP
DEPOSITS AFTER GALVANISING
- WELDING IN ACCORDANCE WITH AS 1554.1

DETAIL A

SECTION B-B

DETAIL C

UNLESS OTHERWISE STATED

ALL MEASURES IN MILLIMETERS.

GENERAL CAST TOLERANCES:
CT9 to ISO 8062.

CASTING RADII: 3 mm
DRAFT TAPERS: 2°

LINEAR MACHINING TOLERANCE:

X. ±0.25 mm
X.X ±0.10 mm

ANGULAR MACHINING TOLERANCE:

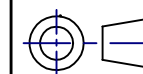
X. ±0.5°
X.X ±0.1°

NOM = Nominal; O/A = Overall; TYP = Typical; C/O = Clear Opening

FINISH: ALL CAST SURFACES TO BE PAINTED BLACK.
FABRICATED COMPONENTS TO BE HOT DIP
GALVANISED TO AS4680.
RUST PROOF SEALANT TO BE APPLIED ON ALL
MACHINED SURFACES.



GATIC PTY LTD
9-15 Radford Road, PO Box 312, Reservoir VIC. 3073
Ph- 03 9316 2666 Fax- 03 9315 0099 www.gatic.com.au



THIRD ANGLE
PROJECTION

| | | | | | | |
|-----------|------|----------|---------|-----------|-----------|------------------|
| DESIGNED: | BY | DATE | CODE: | 331G94HSE | TITLE: | 331G94HSE |
| DRAWN: | F.M. | 03-02-10 | SCALE: | N.T.S. | MATERIAL: | Structural Steel |
| CHECKED: | S.S. | 03-02-10 | FORMAT: | A3 | DRG. No.: | 3563 |
| APPROVED: | H.B. | 03-02-10 | SHEET: | 1 of 1 | REV: | A |